

To: Laurynn Evans  
From: Jason Rhoads  
Date: November 1, 2018  
Subject: Intra-District and Inter-District Transfer Summary Reports

---

The attached documents contain a summary of intra-district and inter-district transfer students associated with North Kitsap School District.

Details are:

1. **Page 1** - Outlines the number of North Kitsap resident students who are currently attending schools in other districts and the number of out-of-district students who are enrolled in schools here.
2. **Pages 2-4** - For the resident students who have transferred to other districts, this section illustrates the North Kitsap schools these students would attend if they were enrolled here.
3. **Page 5** - Provides a historical comparison of the data from Page 1.
4. **Pages 6-7** - Shows more detail (than Page 1) of the number of out-of-district students who are enrolled in schools here.
5. **Pages 8-9** - Represents the number of parent-requested in district (school-to-school) transfers.

**Summary of Students Released and Received by  
North Kitsap School District  
October 2018**

**Summary of Students Released to other districts as of October of noted school year**

	Bainbridge	Bremerton	Central	Chimacum	Quilcene	Misc.	Internet Schools
2007-2008	76	18	217	1	0	3	34
2008-2009	85	17	241	4	1	11	50
2009-2010	85	11	272	1	14	13	90
2010-2011	66	8	236	0	7	17	82
2011-2012	80	7	274	0	42	9	59
2012-2013	74	9	260	2	47	17	60
2013-2014	105	8	295	0	67	12	105
2014-2015	123	4	251	1	73	4	81
2015-2016	115	12	246	0	64	6	86
2016-2017	122	13	245	4	63	17	91
2017-2018	113	20	241	2	55	17	57
2018-2019	130	25	281	0	47	5	59

**Summary of Students Received from other districts as of October of noted school year**

	Bainbridge	Bremerton	Central	Chimacum	Quilcene	Misc.	Internet Schools
2007-2008	3	12	42	20	3	8	NA
2008-2009	6	14	47	15	3	2	NA
2009-2010	3	8	41	11	1	6	NA
2010-2011	5	10	32	14	2	6	NA
2011-2012	6	11	31	27	4	7	NA
2012-2013	7	7	30	25	4	5	NA
2013-2014	5	14	45	25	2	5	NA
2014-2015	6	18	62	17	2	5	NA
2015-2016	4	16	79	19	1	4	NA
2016-2017	9	20	65	25	0	6	NA
2017-2018	13	27	62	36	0	7	NA
2018-2019	13	27	63	40	0	10	NA

**Released Students by NKSD School by Grade as of October 2018**

**Student's NKSD Boundary School**

Released to:	Grade	Gordon Elem	KHS	KMS	NKHS	Pearson Elem	PMS	Poulsbo Elem	Suquamish Elem	Vinland Elem	Wolfle Elem	Grand Total	
<b>Bainbridge Island School District</b>	1	2									2	4	
	2	1						4		1		6	
	3	2						1	3			6	
	4	2				1			2		1	6	
	5	2					1		2	1		6	
	6			1			3		1			5	
	7			1			3		1			5	
	8			6			7					13	
	9			5	1	8		1				15	
	10			17		10						27	
	11			8		4						12	
	12			6		12						18	
	K		1				1		4		1		7
			10	36	9	34	2	15	9	9	3	3	130

Released to:	Grade	Gordon Elem	KHS	KMS	NKHS	Pearson Elem	PMS	Poulsbo Elem	Suquamish Elem	Vinland Elem	Wolfle Elem	Grand Total
<b>Bremerton School District</b>	1					1				1		2
	2					1						1
	3	1								1		2
	4	1				2						3
	5					1				1		2
	7			1			1					2
	9				1							1
	10		2									2
	11				2							2
	12			2		3						5
	K					2					1	
		2	4	1	6	7	1	0	0	4	0	25

**Released Students by NKSD School by Grade as of October 2018**  
**Student's NKSD Boundary School**

Released to:	Grade	Gordon Elem	KHS	KMS	NKHS	Pearson Elem	PMS	Poulsbo Elem	Suquamish Elem	Vinland Elem	Wolfe Elem	Grand Total
<b>Central Kitsap School District</b>	1	1				11		3		3	1	19
	2					10		1	2	6		19
	3					8		5	1	4		18
	4	1				5		2	1	5		14
	5	2				9		3	2	3		19
	6			1		5	11	1	1			19
	7			4	1		22					27
	8			2	2		24					28
	9		1		20		5					26
	10		1		25							26
	11		3		21							24
	12		1		18							19
	K	1				10		2	2	7	1	23
			5	6	7	87	58	62	17	9	28	2

Released to:	Grade	Gordon Elem	KHS	KMS	NKHS	Pearson Elem	PMS	Poulsbo Elem	Suquamish Elem	Vinland Elem	Wolfe Elem	Grand Total
<b>Internet Schools</b>	1									1		1
	2							1		1		2
	3							1				1
	4					1						1
	5	1				1				2		4
	6	1		1			1	1	1	1		6
	7					1	3					4
	8						6				1	7
	9			3		2						5
	10			5		3						8
	11			3		6						9
	12			7		3						10
	K	1										1
		3	18	1	14	3	10	3	1	5	1	59

**Released Students by NKSD School by Grade as of October 2018**

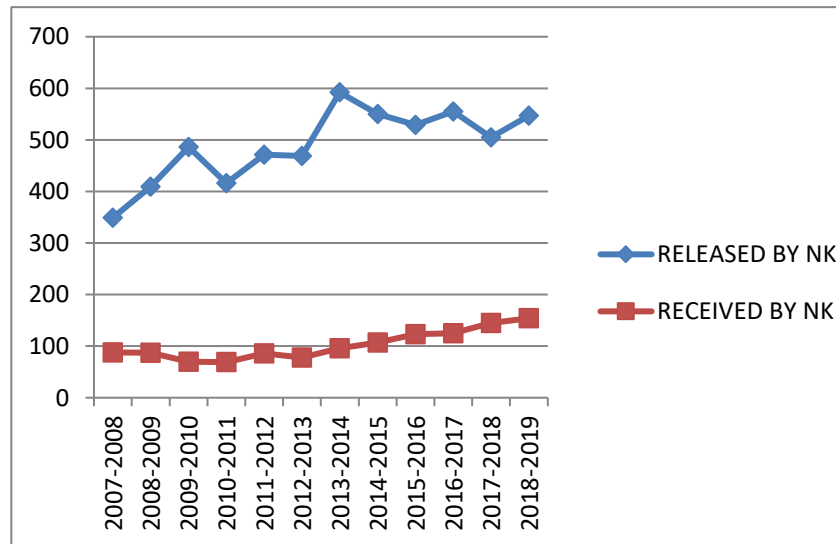
**Student's NKSD Boundary School**

Released to:	Grade	Gordon Elem	KHS	KMS	NKHS	Pearson Elem	PMS	Poulsbo Elem	Suquamish Elem	Vinland Elem	Wolfle Elem	Grand Total	
<b>Quilcene School Dist</b>	1	2				1		1		2	2	8	
	2	1				1				1	1	4	
	3									2	1	3	
	4							2	1	2	1	6	
	5	1				1			2	4		8	
	6						2		1			3	
	7				3			6					9
	8				1			2					3
	K	2				1							3
			6	0	4	0	4	10	3	4	11	5	47

Released to:	Grade	Gordon Elem	KHS	KMS	NKHS	Pearson Elem	PMS	Poulsbo Elem	Suquamish Elem	Vinland Elem	Wolfle Elem	Grand Total
<b>Misc Districts:</b> <i>Edmonds-4</i> <i>South Kitsap-1</i>	2	1										1
	5	1										1
	6			1								1
	8			1								1
	11				1							1
		2	0	2	1	0	0	0	0	0	0	5

**Historical Comparison of Non-Resident Students Released and Received 2008-2019 School Years  
as of October 2018**

SCHOOL YEAR	RELEASED BY NK	RECEIVED BY NK
2007-2008	349	88
2008-2009	409	87
2009-2010	486	70
2010-2011	416	69
2011-2012	471	86
2012-2013	469	78
2013-2014	592	96
2014-2015	550	107
2015-2016	529	123
2016-2017	555	125
2017-2018	505	145
2018-2019	547	154



## NKSD Non-Resident Summary as of October 2018

		Grade Level											K	Grand Total	
		1	2	3	4	5	6	7	8	9	10	11	12		
<b>TO: POULSBO ELEMENTARY</b>															
From:	BR (Bremerton)	1			1									2	4
	CK (Central Kitsap)	2	2	1	3	1								1	10
	CHI (Chimacum)			1	1									1	3
	PI(Peninsula)			1											1
	SQ (Sequim)													1	1
		3	2	3	5	1	0	0	0	0	0	0	0	5	19
<b>TO: SUQUAMISH ELEMENTARY</b>															
From:	BI (Bainbridge I)				1	1									2
	BR (Bremerton)			2											2
	CK (Central Kitsap)			2	1									1	4
	CHI (Chimacum)	1				1								1	3
	SK (South Kitsap)				1										1
		1	0	4	3	2	0	0	0	0	0	0	0	2	12
<b>TO: WOLFLE ELEMENTARY</b>															
From:	BI (Bainbridge I)		1												1
	CK (Central Kitsap)		1											1	2
	CHI (Chimacum)		1												1
		0	3	0	0	0	0	0	0	0	0	0	0	1	4
<b>TO: PEARSON ELEMENTARY</b>															
From:	BR (Bremerton)	2	1											1	4
	CK (Central Kitsap)	1	1	2	1	3								1	9
	PI(Peninsula)													1	1
	SK (South Kitsap)			1											1
		3	2	3	1	3	0	0	0	0	0	0	0	3	15
<b>TO: VINLAND ELEMENTARY</b>															
From:	BR (Bremerton)	1		1		1									3
	CK (Central Kitsap)	2			1	2								2	7
	CHI (Chimacum)	1	1	1	1	2								2	8
		4	1	2	2	5	0	0	0	0	0	0	0	4	18
<b>TO: GORDON ELEMENTARY</b>															
From:	CK (Central Kitsap)	1	1												2
	CHI (Chimacum)					1									1
		1	1	0	0	1	0	0	0	0	0	0	0	0	3
<b>TO: POULSBO MIDDLE SCHOOL</b>															
From:	BI (Bainbridge I)							2	1						3
	BR (Bremerton)						2								2
	CK (Central Kitsap)						2	1	2						5
	CHI (Chimacum)						4	3	1						8
	PI(Peninsula)						1								1
	PT (Port Townsend)						1								1
	SK (South Kitsap)							1							1
		0	0	0	0	0	10	7	4	0	0	0	0	0	21

## NKSD Non-Resident Summary as of October 2018

		Grade Level													Grand Total
		1	2	3	4	5	6	7	8	9	10	11	12	K	
<b>TO:</b>	<b>KINGSTON MIDDLE SCHOOL</b>														
From:	BRM (Bremerton)						2	1	1						4
	CK (Central Kitsap)							1	1						2
	CHI (Chimacum)						1		1						2
		0	0	0	0	0	3	2	3	0	0	0	0	0	8
<b>TO:</b>	<b>NORTH KITSAP HIGH SCHOOL</b>														
From:	BI (Bainbridge I)											2	3		5
	BRM (Bremerton)									2			1		3
	CK (Central Kitsap)									3	4	5	6		18
	CHI (Chimacum)									5	4	4			13
	PI (Peninsula)									1					1
	PT (Port Townsend)									1					1
		0	0	0	0	0	0	0	0	12	8	11	10	0	41
<b>TO:</b>	<b>PARENT ASSISTED LEARNING</b>														
From:	BI (Bainbridge I)												1		1
		0	0	0	0	0	0	0	0	0	0	0	1	0	1
<b>TO:</b>	<b>KINGSTON HIGH SCHOOL</b>														
From:	BI (Bainbridge I)												1		1
	BRM (Bremerton)									2		2	1		5
	CK (Central Kitsap)										2	1	1		4
	CHI (Chimacum)										1				1
		0	0	0	0	0	0	0	0	2	3	3	3	0	11
<b>Grand Total</b>		12	9	12	11	12	13	9	7	14	11	14	14	15	153



# NKSD In-District Transfer Grade Tally as of October 2018

Grade Level

TO: <b>POULSBO ELEMENTARY</b>	K	01	02	03	04	05	06	07	08	09	10	11	12	Grand Total
Gordon Elementary	1	1	2	2	2	4								12
Pearson Elementary					1	1								2
Vinland Elementary	2	1	1	1	4	6								15
Wolfe Elementary	2	2	3	1	1									9
	5	4	6	4	8	11								38
TO: <b>SUQUAMISH ELEMENTARY</b>	K	01	02	03	04	05	06	07	08	09	10	11	12	Grand Total
Gordon Elementary	2	4	5	4	1	1								17
Poulsbo Elementary	1		1	2										4
Vinland Elementary	1	2	1											4
Wolfe Elementary			1	2	2	1								6
	4	6	8	8	3	2								31
TO: <b>WOLFLE ELEMENTARY</b>	K	01	02	03	04	05	06	07	08	09	10	11	12	Grand Total
Gordon Elementary	2	5	1	4	5	1								18
Poulsbo Elementary				1										1
Vinland Elementary	2	2	1		2	1								8
	4	7	2	5	7	2								27
TO: <b>PEARSON ELEMENTARY</b>	K	01	02	03	04	05	06	07	08	09	10	11	12	Grand Total
Poulsbo Elementary					1									1
Vinland Elementary	1	1			1	1								4
Wolfe Elementary	1	1												2
	2	2			2	1								7
TO: <b>VINLAND ELEMENTARY</b>	K	01	02	03	04	05	06	07	08	09	10	11	12	Grand Total
Gordon Elementary	1				1									2
Pearson Elementary						1								1
Poulsbo Elementary	4		1		2									7
Wolfe Elementary				1										1
	5		1	1	3	1								11
TO: <b>GORDON ELEMENTARY</b>	K	01	02	03	04	05	06	07	08	09	10	11	12	Grand Total
Pearson Elementary				1										1
Poulsbo Elementary	1													1
Vinland Elementary	3				1									4
Wolfe Elementary	3	3	5	1	5									17
	7	3	5	2	6									23

## NKSD In-District Transfer Grade Tally as of October 2018

<b>TO: POULSBO MIDDLE SCHOOL</b> Kingston Middle School	K	01	02	03	04	05	06	07	08	09	10	11	12	
							13	11	12					36
														36
<b>TO: KINGSTON MIDDLE SCHOOL</b> Poulsbo Middle School	K	01	02	03	04	05	06	07	08	09	10	11	12	
							3	4	2					9
														9
<b>TO: NORTH KITSAP HIGH SCHOOL</b> Kingston High School	K	01	02	03	04	05	06	07	08	09	10	11	12	
										4	1	2	4	11
														11
<b>TO: KINGSTON HIGH SCHOOL</b> North Kitsap High School	K	01	02	03	04	05	06	07	08	09	10	11	12	
										1	4	3	8	16
														16
														16
<b>Grand Total</b>														<b>209</b>